

DRAWING FOR
SHIVTEJ SHETKARI PROD. COMPANY LTD LTD.GAT NO-436/4 A/P-URUN ISLAMPUR TAL.
WALWA, DIST. SANGLI.

ABSTRACT SHEET

PARTICULARS	AMOUNT IN RS.	FINAL
SUB WORK I :- PROPOSED NEW CONSTRUCTION WORK OF PACK HOUSE CAPACITY FOR SHIVTEJ SHETKARI PROD. COMPANY LTD LTD.GAT NO- 436/4		
	Rs	1733840.00
SUBWORK II :- Royalty Charges		
	Rs	<u>16211.00</u>
	Total	Rs 1750051
Add 3% Contingency	0%	0
Add 3% electricity	0%	0
	Total	Rs 1750051
Add 12% GST	0%	Rs 0.00
Add 1% Labour Insurance	0%	0
	Total	<u>Rs 1750051</u>
	Grand total Rs.	1750051

S. S. Gaikwad
Er. Shridhar S. Gaikwad
B. E. (Civil Engineering)
Prepared by

Checked by

DRAWING FOR
SHIVTEJ SHETKARI PROD. COMPANY LTD. LTD.GAT NO-436/4 A/P-URUN ISLAMPUR TAL. WALWA, DIST. SANGLI.

0

Royalty Charges Statements

Sr. No	Particular	Requar Quantity in Cum	Requar Quantity in Brass	Royalt Y Charges @ Rs 400 / Brass	Remarks
1		3	4	5	
			2.83	400	
1	SAND	36.80	13.00	5201.41	
2	METAL Hand broken	0	0.00	0.00	
3	MURUM	57.49	20.31	8125.80	
4	RUBBLE	20.4	7.21	2883.39	
		Total Amount Rs.			
				16210.60	

Say Rs. 16211.00

Jr. Engineer

Sectional Engineer

LEADS & RATES OF MATERIALS

BASED ON STATE SSR 2020-2021

S.N.	MATERIAL & LOCATION	UNIT	Lead in KM	Actual lead	LEAD DIFF.	Pay load	NET	Rate /unit
				5	6	Factor	8	9
1	SAND	CUM	45	641.85	641.85	1.00	641.85	641.85
2	CRUSHED METAL UPTO 40 MM	CUM	10	281.03	281.03	1.00	281.03	281.03
3	METAL ABOVE 40 MM	CUM	10	269.32	269.32	1.00	269.32	269.32
4	RUBBLE	CUM	10	343.81	343.81	1.00	343.81	343.81
5	BRICKS	1000 NOS	10	372.08	372.08	1.00	372.08	372.08
6	HARD MURUM	CUM	5	210.71	210.71	1.00	210.71	210.71
7	SOFT MURUM	CUM	5	210.71	210.71	1.00	210.71	210.71
8	ROYALTY CHARGES	CUM	1	141.34		1.00	0.00	0.00

Jr.Engineer

Sectional Engineer

S.S. Gaikwad

Er. Shridhar S. Gaikwad
B. E. (Civil Engineering)

			QTY	RATE	AMOUNT	
1	C.C. 1:3:6 for foundation & bedding					
		SAND	0.47	641.85	301.67	
		METAL	0.94	281.03	264.17	
2	P & C U.C.R masonry					
		SAND	0.35	641.85	224.65	
		RUBBLE	1.16	343.81	398.82	
3	P & C B.B. masonry in plinth & S.S					
		SAND	0.32	641.85	205.39	
		BRICKS	0.475	372.08	176.74	
4	P & L R.C.C. (M-20) 1:1.5:3					
		SAND	0.425	641.85	272.79	
		METAL	0.85	281.03	238.88	
4-A	P & L R.C.C. 1:2:4					
		SAND	0.425	641.85	272.79	
		METAL	0.85	281.03	238.88	
5	P & A 12 mm tk plaster					
		SAND	0.015	641.85	9.63	
6	P & A 20 mm tk plaster					
		SAND	0.025	641.85	16.05	
7	P & F polished shahabad for sills & dado					
		SAND	0.022	641.85	14.12	
8	P & C half brick wall					
		sand	0.034	641.85	21.82	
		bricks	0.12	372.08	44.85	
9	P & a flush pointing in c.m.1:3 for stone masonry					
		sand	0.003	641.85	1.93	
10	M.S.Channel					
		KG			0.00	
11	Wind ties 1.90 kg / mtr					
		RMT			0.00	
12	M.S.angle sill 4.68 kg / mtr.					
		RMT			0.00	
13	M.S.ladder 18.40 kg / mtr.					
		RMT			0.00	
14	V1 & V2 vents 43.33 kg/m2.					
		SQM.			0.00	
15	P & L R.C.C. M30					
		SAND	0.425	0.00	0.00	
		METAL	0.85	0.00	0.00	

The centre falls under sugarcane area / corporation /Tribal	Building		Road
Hence percentage required to be added will be percentage	5.00%		0.00%
Municipal Council Area	4.00%		10.80%
TOTAL	9.00%		10.80%
Dedu for SCADA	-4.00%		5.00%

SUB WORK 1 : -PROPOSED NEW CONSTRUCTION WORK OF PACK HOUSE CAPACITY FOR SHIVTEJ SHETKARI PROD. COMPANY LTD LTD.GAT NO-436/4
 BASED ON STATE SSR 2020-2021

LN.	DESCRIPTION OF ITEM	QUANTITY	UNIT	LN./P.N	BASIC RATE	Dedu Scada -0.08	LEAD CHARGES			LIFTS & RA	TOTAL OF RATE		ADD % for Area 0.050	TOTAL OF RATE		AMOUNT
							SAND	METAL	Royalty		6 TO 11	12 TO 13		12 TO 13	14	
1	Excavation for foundation in earth, soil of all types, sand, gravel and soft murum, including removing the excavated material up to a distance of 50 m. beyond the building area and stacking and spreading as directed, dewatering, preparing the bed for the foundation and necessary back filling, ramming, watering including shoring and strutting etc. complete. (Lift upto 1.5 m). By Mechanical Means....(Ino21-02, PgnO 197) (STATE SSR) Item Spec: (Bd.A.1 Page No. 259)	86.00	Cum	21.02/197	157.00						157.00	7.85	164.85	14177.00		
2	Providing and laying Cast in situ/Ready Mix cement concrete in M-10 of trap/granitel quartzitel gneiss metal for foundation and bedding including balling out water. Steel centering, formwork, laying/pumping, compacting, roughening them if special finish is to be provided, finishing if required and curing complete, with fully automatic micro processor based PLC with SCADA enabled reversible Drum Type mixer/concrete Batch mix plant (Pan mixer) etc. complete. With fine aggregate (Natural Sand / Crushed sand VSI Grade finely washed etc)....(Ino24-01, PgnO 226) (STATE SSR) Item Spec: (Bd. E. 1 Page No. 287)	300	Cum	24.01/226	4766.00	-381.28	272.79	238.88			4896.38	244.82	5141.20	15424.00		

SUB WORK 1 : -PROPOSED NEW CONSTRUCTION WORK OF PACK HOUSE CAPACITY FOR SHIVTEJ SHETKARI PROD. COMPANY LTD LTD.GAT NO-436/4

LN.	DESCRIPTION OF ITEM	QUANTITY	UNIT	LN/P.N	BASIC RATE	Dedu Scada -0.08	LEAD CHARGES			LIFTS & RA	TOTAL OF RATE 6 TO 11	ADD % for Area 0.050	TOTAL OF RATE 12 TO 13	AMOUNT
							SAND	METAL	Royalty					
1	2	3	4	5	6	7	8	9	10	11	12	13	14	15
3	Providing and laying Cast in situ/Ready Mix cement concrete M-20 of trap / granite /quartzite/ gneiss metal for R.C.C. work in foundations like raft, strip etc. Including balling out water, Steel centering, formwork, cover blocks, laying/pumping, compaction and curing roughening the surface if special finish is to be provided (Excluding reinforcement and structural steel) etc. enabled reversible Drum Type mixer/ concrete Batch mix plant (Pan mixer) etc. complete. With fine aggregate (Natural Sand / Crushed sand VSI Grade finely washed etc	7.54	C.Cum	25.11/230	5704.00	-456.32	272.79	238.88			5759.34	287.97	6047.31	45597.00
4	Providing and laying Cast in situ/Ready Mix cement concrete M-20 of trap / granite /quartzite/ gneiss metal for R.C.C. columns as per detailed designs and drawings or as directed including steel centering, formwork, cover blocks compacting and roughening if special finish is to be provided and curing etc. complete. (Excluding reinforcement and structural steel),with fully automatic micro processor based PLC with SCADA enabled reversible Drum Type mixer/ concrete Batch mix plant (Pan mixer) etc. complete. With fine aggregate (Natural Sand / Crushed sand VSI Grade finely washed etc)	8.64	C.Cum	25.31/232	11000.00	-880.00	272.79	238.88			10631.66	531.58	11163.24	96450.00
5	Providing and laying Cast in situ/Ready Mix cement concrete M-20 of trap/ granite /quartzite/ gneiss metal for R.C.C. beams and lintels as per detailed designs and drawings or as directed including steel centering, formwork, cover blocks, laying/pumping, compaction and roughening the surface if special finish is to be provided and curing etc. complete. (Excluding reinforcement and structural steel), with fully automatic micro processor based PLC with SCADA enabled reversible Drum Type mixer/ concrete Batch mix plant (Pan mixer) etc. complete. With fine aggregate (Natural Sand / Crushed sand VSI Grade finely washed etc)..... (INo25-50, PNo 234) (STATE SSR) Item Spec: (Bd.F.6 Page No. 300 and B.7, Page No.38)	8.73	C.Cum	25.50/234	9500.00	-760.00	272.79	238.88			9251.66	462.58	9714.24	84785.00

BASED ON STATE SSR 2020-2021

SUB WORK 1 : PROPOSED NEW CONSTRUCTION WORK OF PACK HOUSE CAPACITY FOR SHIVTEJ SHETKARI PROD. COMPANY LTD LTD.GAT NO-436/4

BASED ON STATE SSR 2020-2021

LN#	DESCRIPTION OF ITEM	QUANTITY	UNIT	LN/P/N	BASIC RATE	Dedn Scada	LEAD CHARGES			LIFTS & RA	TOTAL OF RATE 6 TO 11	ADD % for Area	TOTAL OF RATE 12 TO 13	AMOUNT
							SAND	METAL	Royalty					
						-0.08					0.050			
6	Providing and fixing colour coated Zincalume (R) AZ150 (min150gms/sqm. total one each side) profiled sheets for roofing. The feed material is manufactured out of nominal 0.45mm Base Metal Thickness (BMT) (0.6mm TMT), Hi-strength steel with min.550MPa yield strength, metallic hot dip coated with Aluminium-Zinc alloy (65% aluminium 43.4%, zinc 1.5%, silicon) with COLORBOND (R) steel quality superdurable polyester paint coat (with inorganic pigment). The paint shall have total coating thickness of nominal 35um, comprising of nominal 25 um exterior coat on top surface and nominal 10um reverse coat on back surface. Profile sheets shall have nominal 1060mm effective cover width and nominal 125-30mm deep ribs with a sub square rib height of nominal 125-260mm center-to-center. (weight of profile 4.52Kilogram/Square Metre)	116.13	SQM	38.34/173	1060.00	-84.80	272.79	238.88			1486.86	74.34	1561.20	181300.00
7	Providing and fixing in position TMT - FE - 600 bar reinforcement of various diameters for R.C.C. pile caps, footings, foundations, slabs, beams columns, canopies, staircase, nowels, chajjas, lintels, parils, copings, fins, arches etc. as per detailed designs, drawings and schedules, including cutting, bending, hooking the base, binding with wires or tack welding and supporting as required complete (NO26-33, P.No 246) (STATE SSR) Item Spec: (P.No.47, State SSR, 2020)	2.20	MT	26.33/246	72000.00						72000.00	3600.00	76600.00	166320.00
8	Providing second class Burnt Brick masonry with conventional/ I.S. type bricks in cement mortar 1:6 in foundations and plinth of inner walls/ in plinth external walls including balling out water manually, striking joints on unexposed faces, raking out joints on exposed faces and watering etc.	10.00	Cum	27.01/254	5500.00						5500.00	275.00	5775.00	57750.00
9	Providing second class Burnt Brick masonry with conventional/ I.S. type bricks in cement mortar 1:6 in superstructure including striking joints, raking out joints, watering and scaffolding etc. Complete	55.98	CUM	27.05/254	5500.00						5500.00	275.00	5775.00	323306.00

SUB WORK 1 :-PROPOSED NEW CONSTRUCTION WORK OF PACK HOUSE CAPACITY FOR SHIVTEJ SHETKARI PROD. COMPANY LTD

Sl. No.	DESCRIPTION OF ITEM	QUANTITY	UNIT	LN./P.N	BASIC RATE	Dedn Scada -0.08	LEAD CHARGES				TOTAL OF RATE 6 TO 11	ADD % for Area 0.050	TOTAL OF RATE 12 TO 13	AMOUNT
							SAND	METAL	Royalty	LIFTS & RA				
1	2	3	4	5	6	7	8	9	10	11	12	13	14	15
14	Providing & applying washable oil-bound distemper of approved colour and shade to old & new surfaces in two coats including scaffolding, preparing the surface, (excluding the primer coat), etc. complete.....(H038-11, PqNo 291) (STATE SSR) Item Spec: (Bd.P.6 Page No. 413	174.06	Sqm	36.11/291	39.50						39.50	1.98	41.48	7220.00
16	Providing and applying two coats of exterior stylic emulsion paint confirming to corresponding IS, of approved manufacture and of approved colour to the plastered surfaces including cleaning preparing the plaster surface, applying primer coat, scaffolding if necessary, and watering the surface for two days etc complete.....(H038-26, PqNo 288) (STATE SSR) Item Spec: (As directed by Engineer in charge.)	185.49	SQM	36.35/288	190.00						190.00	9.50	199.50	37005.00
16	Providing and fixing Country cut teakwood double or single leaf second class fully panelled door shutter with 36 mm thick stile and rail with 26mm thick panel with operable fanlight as per detailed drawings. Excluding the door frame 60mmx100mm stainless steel fixtures and fastening and finishing the woodwork with oil painting 3 coats. (Excluding the door frame) BD-1-7 and 8 Page Number 481-82	0.00	SQM	39.59	8784.00						8784.00	439.20	9223.20	0.00
17	Providing and laying in situ cement concrete M20 with tremix treatment for 100 mm thickness for flooring with groove cutting of 4mm wide and 20mm deep with necessary filling with bitumen etc. complete.	116.13	SQM	33.30/157	1500.00						1500.00	75.00	1575.00	182903.00
18	Providing and fixing steel window of various sizes as per detailed drawing without hot dip zinc coating, without ventilators, including fabricating / glazing with plain / obscured glass panels of approved type and quality, iron oxidised fixtures and fastenings, finishing with oil painting two coats complete (with guard bars 12 mm square at 10 cm c/c.)	20.44	SQM	39.20/316	3000.00						3000.00	160.00	3160.00	64381.00
19	Providing and fixing rolling shutter fabricated from steel laths of minimum thickness 0.9 mm with lock plate of 3.15 mm thickness reinforced with 35 x 35 x 6 mm angle section fitted with sliding bolts and handles for both sides, deep M.S. channel section of depth and thickness not less than 65 mm and 3.15 mm respectively with hold fast arrangements, M.S. Bracket plate 300 x 300 x 3.16 mm minimum size and shape with square bar, suspension shaft of minimum 32 mm diameter, hood cover of M.S. sheet not less than 0.9 mm thickness and of any size at top and safety devices including mechanical gear	5.14	SQM		3005.00						3675.00		3675.00	0.00
														33604.00

BASED ON STATE SSR 2020-2021

SUB WORK 1 : PROPOSED NEW CONSTRUCTION WORK OF PACK HOUSE CAPACITY FOR SHIVTEJ SHETKARI PROD. COMPANY LTD LTD.GAT NO-436/4
 BASED ON STATE SSR 2020-2021

Sl. No.	DESCRIPTION OF ITEM	QUANTITY	UNIT	LN/P.N	BASIC RATE	LEAD CHARGES							TOTAL OF RATE 6 TO 11	ADD % for Area 0.050	TOTAL OF RATE 12 TO 13	AMOUNT	
						Debn Seeds -0.08	SAND	METAL	Royalty	LIFTS & RA	11	12					13
19	Providing structural steel work in trusses or similar trussed portion and directed including cutting & gusset plates as per detailed design drawing and corrosive paint	3	MT		80000.00												
20	Supplying & erecting mains with 2x1.5 sq.mm. and earth wire 1.5 sq.mm FRLSH PVC copper wire, in HMS PVC conduit min. 20mm dia, CSR 2019-20 Item No 1-6-2 Additional specification No: WG-MA/PC.	500	RMT		1100.00										160000.00	160000.00	
21	Supplying & erecting mains with 2x2.5 sq.mm. and earth wire 1.5 sq.mm FRLSH PVC copper wire in HMS PVC conduit min. 20mm dia, CSR 2019-20 Item No 1-6-4 Additional specification No: WG-MA/PC.	10.00	RMT		75.00										750.00	750.00	
22	Supplying & erecting mains with 2x4 sq.mm. and earth wire 2.5 sq.mm FRLSH PVC copper wire in HMS PVC conduit min. 20mm dia, CSR 2019-20 Item No 1-6-6 Additional specification No: WG-MA/PC.	2.00	RMT		75.00										75.00	150.00	
23	Supplying and erecting Ceiling rose / Baton holder / Stairing holder / hanging cord switch / hanging bell push / pendant holder bakelite base 6A, erected on filled polypropylene board or polished double wooden block/PVC junction box, CSR2019-20 Item No 1-7-7	2.00	EACH		12.00										12.00	24.00	
24	Supplying and erecting hylam sheat/ ebonite sheet 3 mm thick for covering wall entries including cutting, drilling and fixing with nut bolts / screws etc. complete. CSR 2019-20 Item No 6-1-9	4.00	KG		52.00										520.00	2080.00	
25	Supplying and erecting triple pole and neutral distribution board (TRNDB) surface/ flush mounted suitable for SPMCB of 12 ways on iron / GI frame (horizontal busbar type) CSR2019-20 Item No 6-4-1 Additional specification no: SW-SWRM/CBDR	2.00	EACH		1200.00										1200.00	2400.00	
26	Supplying, erecting & marking FPMCB 40A to 63A in provided distribution board, CSR 2019-20 Item No 6-3-17 Additional specification No: SW.	1.00	EACH		2200.00										2200.00	2200.00	
27	Supplying, erecting & marking DPMCB 6 A to 32 A B- series (for lighting) in provided distribution board, CSR 2019-20 Item No 6-3-7 Additional specification No: SWSWR/ MCB	1.00	EACH		440.00										440.00	440.00	
28	Supplying & erecting conventional spike Providing earthing with galvanized iron earth plate size 60 x 60 x 0.6 cm with funnel with a wire mesh for watering and brick masonry block C.I. cover complete with all materials, testing & recording the results. CSR 2019-20 Item No 9-1-3 Additional specification No.	1.00	EACH		220.00										220.00	220.00	

SUB WORK 1 :- PROPOSED NEW CONSTRUCTION WORK OF PACK HOUSE CAPACITY FOR SHIVTEJ SHETKARI PROD. COMPANY LTD. GAT NO-436/4

Sl. No.	DESCRIPTION OF ITEM	QUANTITY	UNIT	LN/P/N	BASIC RATE	LEAD CHARGES					TOTAL OF RATE 6 TO 11	ADD % for Area 13	TOTAL OF RATE 12 TO 13	AMOUNT
						Debn Scada -0.08	SAND	METAL	Royalty	LIFTS & RA				
29	Supplying, erecting & terminating XLPE armoured cable 4 core 26 sq. mm. aluminum conductor with continuous 6.48 sq. mm. (12 SWG) G.I. earth wire complete erected with glands & lugs, on wall/ trusses/pole or laid in provided trench/ pipe. CSR 2019-20 Item NO 7-1-30 Additional specification No CB.	6.00	RMFT		160.00								160.00	800.00
30	Supplying and laying (including excavation of suitable width & depth up to 90 cm) 76 mm outside dia. double wall corrugated pipes (DWC) of HDPE for enclosing cable below ground/road surface, to required depth complete. CSR 2019-20 Item No 7-6-10	6.00	RMFT		142.00								142.00	800.00
31	Supplying & erecting Siemens type brass cable glands for 4 core 35 sq. mm./3 core 60 sq. mm. for XLPE armoured cable. CSR 2019-20 Item No 7-7-4 Additional specification No. CB-QL	1.00	EACH		710.00								710.00	710.00
32	Supplying & erecting crimping type copper lugs for cable 26 sq. mm. complete. CSR 2019-20 Item No 7-9-2 Additional specification No. CB-CLUCU	1.00	EACH		220.00								220.00	220.00
33	Supplying and erecting single pole and neutral distribution board (SPNDB) surface/flush mounted with 2 ways for incoming and 2 ways for outgoing SPMCBs on iron GI frame. CSR 2019-20 Item No 6-4-14 Additional specification No. SW-SWR/M/CBDB	1.00	EACH		1200.00								1200.00	1200.00
34	Supplying and erecting LED Street light fitting suitable for above 40W to 48W lamp, including lamp, with PF > 0.95 class IP 65 and above housing of pressure die cast aluminium alloy and heat sink extruded aluminium complete CSR 2019-20 Item No 2-5-4 Additional specification No. FGODF/FLS2.	1.00	EACH		955.00								955.00	955.00
35	Supplying and erecting Street light bracket made from 40 mm. dia. 'B' class G.I. Pipe, 0.6m. in length along with pole cap of 300 mm length and 80 mm dia duly welded with provided leads. CSR 2019-20 Item No 2-9-2 Additional specification No. EG-BKT/BPC	1.00	EACH		3000.00								3000.00	3000.00

BASED ON STATE SSR 2020-2021

SUB WORK 1 : -PROPOSED NEW CONSTRUCTION WORK OF PACK HOUSE CAPACITY FOR SHIVTEJ SHETKARI PROD. COMPANY LTD. BASED ON STATE SSR 2020-2021

Sl. No.	DESCRIPTION OF ITEM	QUANTITY	UNIT	L.N./P.N.	BASIC RATE	Dedn Scada -0.08	LEAD CHARGES				TOTAL OF RATE 6 TO 11	ADD % for Area 0.050	TOTAL OF RATE 12 TO 13	AMOUNT
							SAND	METAL	Royalty	LIFTS & RA				
37	erecting Air-Termination consisting of tubular copper rod of 25mm dia. 1.2 mm thick with multiple points head 1.2 mt. long (Heavy Duty) welded or clamped to G.I. pipe pole B grade 60 mm dia or required length with M.S. round brass plate 26 Cm diam and 10mm thick at bottom embedded in cement concrete 1:3:6 of foundation of size 46 cm diam x 45 cm Height and providing earthing with copper strip of size 60 x 60 x 0.3 cms with cadmium plated nut bolts to fix earthing strip buried in specially prepared earth pits 1.5 metre below ground level with 40 kg charcoal and salt with alternate layers of charcoal and salt and G.I.pipe 40mm dia 2 meter length buried in earthen upto earthing plate remaining portion above ground level for watering and refilling complete Note- Copper strip from lightning conductor is not considered in this item. CSR 2020-21 Item No 44.18 Additional Spec No:BDW 1 PAGE No 681	1.00	NOS		3000.00								3000.00	3000.00
38	Providing and fixing copper strip 26mm wide and 3mm thick for lightning conductor including fixing with screws required scaffolding etc. complete Note- Lightning conductor and earthing pit is not considered in this item. CSR 2020-21 Item No 44.18 Additional Spec No :BDW 1 Page No 681 & As directed by Engineer In Charge	3.00	KNIT		300.00								300.00	900.00
39	providing wind operated turbo S.S ventilator system (24 inch dia) over existing roof including cutting of sheets proper fixing in position to true line & level with all fixtures & fastening providing 0.8 mm thick FRP sheets for covering area between roof & fan so as to provide waterproof joints with approved water proofing compound making good the roof surface including cleaning D.S.R 304/123	6.00	NOS		1200.00								1200.00	7200.00
TOTAL RS													1733840.00	

1392.68

25349.00

S.S. Gaikwad
Er. Shridhar S. Gaikwad
B. E. (Civil Engineering)

DRAWING FOR
SHIVTEJ SHETKARI PROD. COMPANY LTD LTD.GAT NO-436/4 A/P-URUN ISLAMPUR TAL.
WALWA, DIST. SANGLI.

MEASUREMENT SHEET

SUB WORK 1 :-PROPOSED NEW CONSTRUCTION WORK OF PACK HOUSE CAPACITY FOR
SHIVTEJ SHETKARI PROD. COMPANY LTD LTD.GAT NO-436/4

Item Nos	Description of Items	NO.S	LENGTH	BREDT H	DEPTH /	TOTAL	Unit
					HIGHT	QUANTITY	

1 Excavation for foundation in earth, soil of all types, sand, gravel and soft murum, including removing the excavated material up to a distance of 50 m. beyond the building area and stacking and spreading as directed, dewatering, preparing the bed for the foundation and necessary back filling, ramming, watering including shoring and strutting etc. complete. (Lift upto 1.5 m.) By Mechanical Means....(INo21-02, PgNo 197) (STATE SSR) Item Spec: (Bd.A.1 Page No. 259) C.um

COLUMN FOOTNGS	1	X	10	X	1.5	X	1.60	X	2.53	=	60.72	
BEAMS	1	X	4	X	7.62	X	1.00	X	0.40	=	12.19	
	1	X	2	X	15.24	X	1.00	X	0.40	=	12.19	
											Total	= 85.10
											SAY	= 86.00 C.um

2 Providing and laying Cast in situ/Ready Mix cement concrete in M-10 of trap/ granitel quartzitel gneiss metal for foundation and bedding including bailing out water, Steel centering, formwork, laying/pumping, compacting, roughening them if special finish is to be provided, finishing if required and curing complete, with fully automatic micro processor based PLC with SCADA enabled reversible Drum Type mixer/concrete Batch mix plant (Pan mixer) etc. complete. With fine aggregate (Natural Sand / Crushed sand VSI Grade finely washed etc)....(INo24-01, PgNo 226) (STATE SSR) Item Spec: (Bd. E. 1 Page No. 287) C.um

COLUMN FOOTNGS	1	X	10	X	1.5	X	1.60	X	0.10	=	2.40	
BEAMS												

0

											TOTAL	2.40
											SAY	= 3.00 C.um

3 Providing and laying Cast in situ/Ready Mix cement concrete M-20 of trap / granite /quartzite/ gneiss metal for R.C.C. work in foundations like raft, strip foundations, grillage and footings of R.C.C. columns and steel stanchions etc. including bailing out water, Steel centering, formwork ,cover blocks, laying/pumping, compaction and curing roughening the surface if special finish is to be provided (Excluding reinforcement and structural steel) etc. complete, with fully automatic micro processor based PLC with SCADA enabled reversible Drum Type mixer/ concrete Batch mix plant (Pan mixer) etc. complete. With fine aggregate (Natural Sand / Crushed sand VSI Grade finely washed etc) C.um

COLUMNS FOOTNGS	1	X	10	X	1.3	X	1.5	X	0.40	=	7.54	
-----------------	---	---	----	---	-----	---	-----	---	------	---	------	--

											TOTAL	7.54
											SAY	= 7.54 C.um

4 Providing and laying Cast in situ/Ready Mix cement concrete M-20 of trap / granite /quartzite/ gneiss metal for R.C.C. columns as per detailed designs and drawings or as directed including steel centering, formwork, cover blocks compacting and roughening if special finish is to be provided and curing etc. complete. (Excluding reinforcement and structural steel).with fully automatic micro processor based PLC with SCADA enabled reversible Drum Type mixer/ concrete Batch mix plant (Pan mixer) etc. complete. With fine aggregate (Natural Sand / Crushed sand VSI Grade finely washed etc) C.um

column	1	X	10	X	0.3	X	0.45	X	6.40	=	8.64	
--------	---	---	----	---	-----	---	------	---	------	---	------	--

											TOTAL	8.64
											SAY	= 8.64 C.um

5 Providing and laying Cast in situ/Ready Mix cement concrete M-20 of trap/ granite /quartzite/ gneiss metal for R.C.C. beams and lintels as per detailed designs and drawings or as directed including steel centering, formwork, cover blocks, laying/pumping, compaction and roughening the surface if special finish is to be provided and curing etc. complete. (Excluding reinforcement and structural steel). with fully automatic micro processor based PLC with SCADA enabled reversible Drum Type mixer/ concrete Batch mix plant (Pan mixer) etc. complete. With fine aggregate (Natural Sand / Crushed sand VSI Grade finely washed etc).... (INo25-50, PgNo 234) (STATE SSR) Item Spec: (Bd.F.6 Page No. 300 and B.7, Page No.38) C.um

BEAMS AT GL	1	X	2	X	15.24	X	0.23	X	0.45	=	3.15	
-------------	---	---	---	---	-------	---	------	---	------	---	------	--

BEAMS AT SHUTTER LEVEL

1	X	4	X	7.62	X	0.23	X	0.45	=	3.15
1	X	2	X	15.24	X	0.23	X	0.23	=	1.61
1	X	2	X	7.62	X	0.23	X	0.23	=	0.81

TOTAL = 8.73
SAY = 8.73 C.um

6 Providing and fixing colour coated Zinalume (R) AZ150 (min150gms/sq.mt. total one ach side) profiled sheets SQM forroofing. The feed material is manufactured out of nominal 0.45mm Base Metal Thickness (BMT) (0.5mmTCT) ,Hi-strength steel with min .550MPa yield strength,metallic hot dipcoated with Aluminium-Zincalloy(55% aluminium 43.4% zinc1.6% silicon) with COLORBOND (R) steel quality superdurable polyester paint coat (with inorganic pigment).The paint shall have atotal coating thickness of nominal 35um, comprising of nominal 25 um exterior coat on top surface and nominal 10um reverse coat on back surface.Profile sheets hall havenom.950-1050mmeffectivecoverwidthandnominal25-30mmdeepribswithsubtlesquareflutinginthefivepanatnominal180-250mmcenter-to-center..(weightofprofile4.52Kilogram/Square Metre)

GROUND FLOOR

1	X	1	X	15.24	X	7.62	X	1.00	=	116.13
---	---	---	---	-------	---	------	---	------	---	--------

TOTAL = 116.13
SAY = 116.13 SQM

7 Providing and fixing in position TMT - FE - 500 bar reinforcement of various diameters for R.C.C. pile caps, footings, foundations, slabs, beams columns, canopies, staircase, newels, chajjas, linteis pardis, copings, fins, arches etc. as per detailed designs, drawings and schedules, including cutting, bending, hooking the bass, binding with wires or tack welding and supporting as required complete (INo26-33, PgNo 245) (STATE SSR) Item Spec: (Bd.F.17, Page No. 306)

TOTAL = 2200.00 Kg
SAY = 2.200 MT

8 Providing second class Burnt Brick masonry with conventional/ I.S. type bricks in cement mortar 1:6 in foundations and plinth of inner walls/ in plinth external walls including bailing out water manually , striking joints on unexposed faces, raking out joints on exposed faces and watering etc. Complete.

1	X	2	X	15.24	X	0.23	X	0.91	=	6.38
1	X	2	X	7.62	X	0.23	X	0.91	=	3.19

Total = 9.57
SAY = 10.00 Cum

9 Providing second class Burnt Brick masonry with conventional/ I.S. type bricks in cement mortar 1:6 in superstructure including striking joints, raking out joints, watering and scaffolding etc. Complete

1	X	2	X	15.24	X	0.23	X	4.55	=	31.90
1	X	4	X	7.62	X	0.23	X	4.55	=	31.90

DEDUCTION FOR WINDOW & DOOR

1	X	1	X	2.54	X	0.23	X	3.60	=	2.10
1	X	11	X	1.21	X	0.23	X	1.21	=	3.70
1	X	12	X	1.21	X	0.23	X	0.60	=	2.00

TOTAL = 7.81
SAY = 55.98

SAY = 55.98 CUM

10 Filling in plinth and floors with contractors material/brought from outside and approved by Engineer incharge in layers of 15cm, to 20cm, including watering and compaction etc. complete.....(IN021-37, PgNo 201) (STATE SSR) Item Spec. (Bd. A.11 Page No. 283)

1	X	1	X	7.62	X	15.24	X	0.70	=	81.29
TOTAL = 81.29										

11	Providing soling using 80 mm size trap metal in 15 cm. layer including filling voids with Crushed sand/grit, ramming, watering etc. Complete									Sq.M	
	Floor Area	1	X	1	X	7.62	X	15.2	X	0.20	= 23.23
	BELOW FOUNDATION	0	X	1	X	1.50	X	1.6	X	0.20	= 0.00
										TOTAL	= 23.23
										SAY	= 24.00 Sq.M

12 Providing internal cement plaster 12mm thick in single coat in cement mortar 1:4 without neeru finish to concrete or brick surfaces, in all positions including scaffolding and curing etc. complete....(INo32-04. PgNo 268) (STATE SSR) Item Spec: (Bd. L.2 Page No. 368)

		1	X	2	X	15.24	X	1.0	X	4.55	= 138.68
		1	X	4	X	7.62	X	1.0	X	4.55	= 138.68
											277.37
	DEDUCTION FOR WINDOW & DOOR	1	X	1	X	2.54	X	1.00	X	3.60	= 9.14
		1	X	11	X	1.21	X	1.00	X	1.21	= 16.11
		1	X	12	X	1.21	X	1.00	X	0.60	= 8.71
											33.96
										TOTAL	= 243.41

SAY = 243.41 Sqm

13 Providing sand faced plaster externally in cement mortar using approved screened sand, in all positions including base coat of 15 mm thick in cement mortar 1:4 using waterproofing compound at 1 kg per cement bag curing the same for not less than 2 days and keeping the surface of the base coat rough to receive the sand faced treatment 6 to 8 mm thick in cement mortar 1:4 finishing the surface by taking out grains and curing for fourteen days scaffolding etc.complete....(INo32-11, PgNo 269) (STATE SSR) Item Spec: (Bd L.7 Page No. 369)

		1	X	2	X	15.24	X	1.0	X	4.80	= 146.30
		1	X	2	X	7.62	X	1.0	X	4.80	= 73.15
											219.46
	DEDUCTION FOR WINDOW & DOOR	1	X	1	X	2.54	X	1.00	X	3.60	= 9.14
		1	X	11	X	1.21	X	1.00	X	1.21	= 16.11
		1	X	12	X	1.21	X	1.00	X	0.60	= 8.71
											33.96
										TOTAL	= 185.49

SAY = 185.49 SqM

14 Providing & applying washable oil-bound distemper of approved colour and shade to old & new surfaces in two coats including scaffolding, preparing the surfaces, (excluding the primer coat.) etc. complete....(INo36-11, PgNo 291) (STATE SSR) Item Spec: (Bd.P.5 Page No. 413)

		1	X	2	X	15.24	X	1.0	X	4.55	= 138.68
		1	X	2	X	7.62	X	1.0	X	4.55	= 69.34
											208.03
	DEDUCTION FOR WINDOW & DOOR	1	X	1	X	2.54	X	1.00	X	3.60	= 9.14
		1	X	11	X	1.21	X	1.00	X	1.21	= 16.11
		1	X	12	X	1.21	X	1.00	X	0.60	= 8.71
											33.96
										TOTAL	= 174.06

SAY = 174.06 SqM

15 Providing and applying two coats of exterior stytic emulsion paint confirming to corresponding 1S. of approved SQM manufacture and of approved colour to the plastered surfaces including cleaning preparing the plaster surface, applying primer coat ,scaffolding if necessary, and watering the surface for two days etc complete.....(IN035-25, PgNo 288) (STATE SSR) Hem Spec: (As directed by Engineer in charge.)

1 X 1 X 1.00 X 1.00 X 185.49 = 185.49

16 Providing and fixing Country cut teakwood double or single leaf second class fully panelled door shutter with 35 mm thick style and rail with 25mm thick panels with openable fanlight as per detailed drawings. Excluding the door frame 60mmx100mm stainless steel fixtures and fastening and finishing the woodwork with oil painting 3 coats. (Excluding the door frame) BD-T-7 and 8 Page Number 481-82 SQM

1 X 0 X 1.21 X 1.22 X 1.00 = 0.00

TOTAL = 0.00

SAY = 0.00 SQM

17 Providing and laying in situ cement concrete M20 with tremix treatment for 100 mm thickness for flooring with groove cutting of 4mm wide and 20mm deep with necessary refilling with bitumen etc. complete.

1 X 1 X 7.62 X 15.24 X 1.00 = 116.13

TOTAL = 116.13

SAY = 116.13 SQM

18 Providing and fixing steel window of various sizes as per detailed drawing without hot dip zinc coating, without ventilators, including fabricating / glazing with plain / obscured glass panels of approved type and quality, iron oxidised fixtures and fastenings, finishing with oil painting two coats complete (with guard bars 12 mm square at 10 cm c/c.) SQM

1 X 12 X 0.60 X 1.00 X 0.60 = 4.32

1 X 11 X 1.21 X 1.00 X 1.21 = 16.12

TOTAL = 20.44

19 Providing and fixing rolling shutter fabricated from steel laths of minimum thickness 0.9 mm with lock plate of 3.15 mm thickness reinforced with 35 x 35 x 5 mm angle section fitted with sliding bolts and handles for both sides, d'ep M.S. channel section of depth and thickness not less than 65 mm and 3.15 mm respectively with hold fast arrangements, M.S. Bracket plate 300 x 300 x 3.15 mm minimum size and shape with square bar, suspension shaft of minimum 32 mm diameter, hood cover of M.S. sheet not less than 0.9 mm thickness and of any size at top and safety devices including mechanical gear operation arrangement consisting of worm gear wheels and worms of high grade cast iron or mild steel and one coat of red lead primer SQM

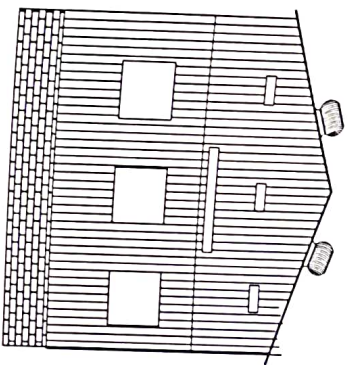
1 X 1 X 2.54 X 1.00 X 3.60 = 9.14

1 X 0 X 2.21 X 1.00 X 3.60 = 0.00

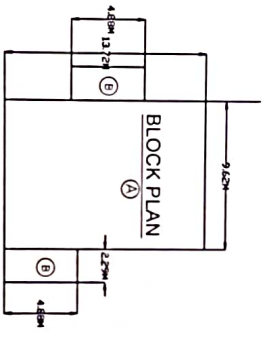
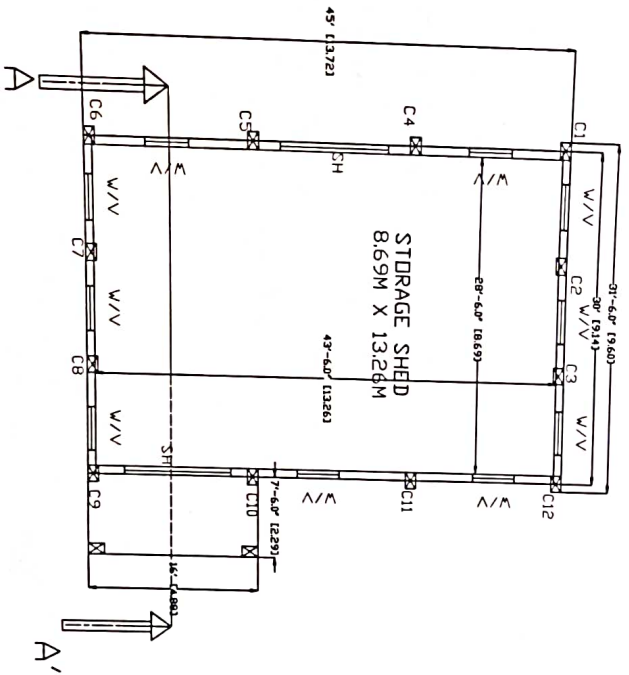
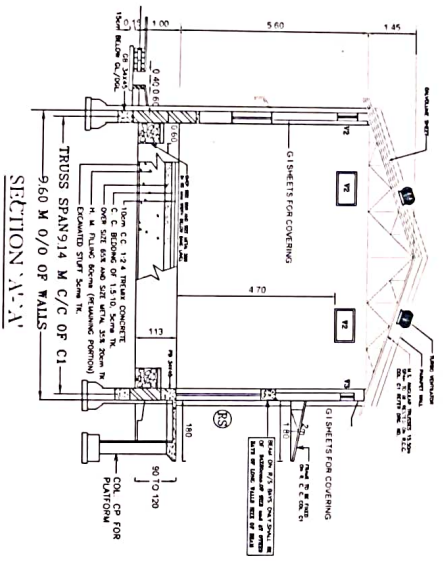
1 X 0 X 2.74 X 1.00 X 3.20 = 0.00

TOTAL = 9.14

S.S. Gaikwad
Er. Shridhar S. Gaikwad
B. E. (Civil Engineering)



FRONT ELEVATION
SCALE 1:100



BUILT UP AREA CALCULATIONS

BUILDING SIZE	SQ. M.
MAIN BUILDING (A)	131.98
15.24M X 7.62 M	=
PLATFORMS : (B)	22.35
2X4.88M X 2.29M	=
TOTAL B / UP =	154.33 sq. m.

CONSTRUCTION OF STORAGE SHED

SCHEDULE OF DOORS & WINDOWS			
TYPE	SIZE	NO.	DESCRIPTION
SH	2.5 X 3.6	2	SHUTTER
W	1.21 X 1.21	10	ALUMINIUM WINDOW
V	1.21 X 0.60	10	ALLU LOUVERD WINDOW
TURBO VENTILATOR - 6			

DRAWING AT - URUN ISLAMPUR

OWNER NAME- SHIVTEJ SHETKARI
PROD. COMPANY LTD.
ER. SHRIDHAR GAIKWAD (B.E CIVIL)
A/P- AITWADE BK. (Sr.No.;B-20: 16502)

ER. SIGNATURE OWNER
SIGNATURE

Er. Shridhar S. Gaikwad
S.S. Gaikwad
B. E. (Civil Engineering)